
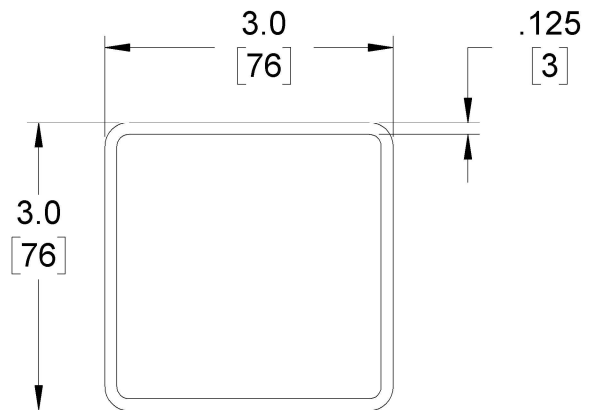
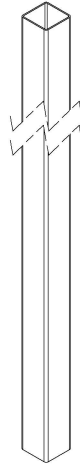
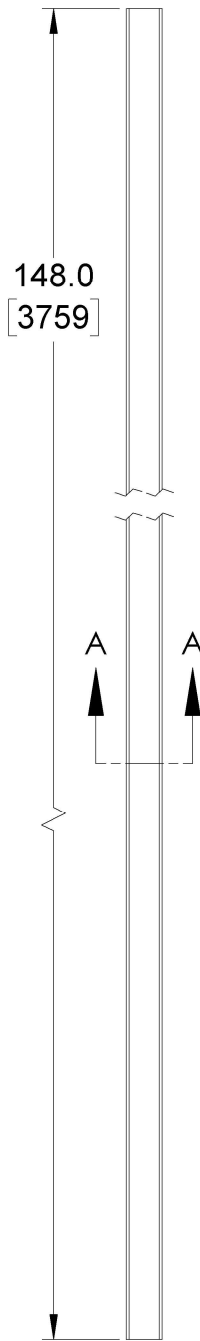


ITEM NO.	PART NUMBER	MATERIAL	QTY.
1	BOARD CUT-96	BOARD, CEDAR	4
2	BOARD FULL-96	BOARD, CEDAR	46
3	POST = 3" X 3" X 148" L	STEEL, 1/8" WALL	3
4	410 STAINLESS STEEL SELF DRILLING SCREW, #10 X 5/8" PAN HEAD WITH #2 PHILLIPS DRIVE HEAD	410 STAINLESS STEEL	24
5	410 STAINLESS STEEL COATED BLACK, 5/16" X 1.75", SQUARE NECK CARRIAGE BOLT	410 STAINLESS STEEL	8
6	410 STAINLESS STEEL WOOD SCREW COATED BLACK MAGNI, #8 X 3/4", PAN HEAD WITH #2 PHILLIPS DRIVE	410 STAINLESS STEEL	231
7	HEX FLANGE NUT ISO - 4161 - M - N	410 STAINLESS STEEL	8
8	V-BRACKET	ALUMINUM 1/8" WALL, POWDER COATED BLACK	12
9	VERTICAL STRINGER-92" X 3" X 1.5"	6061 ALUMINUM 1/8" WALL, POWDER COATED BLACK	4
10	LUMBER-BOARD-SUPPORT	STEEL, A36	6
11	2X4X92-75 BOARD	BOARD, 2" X 4" X 92 3/4"	2

<p><b>PROPRIETARY AND CONFIDENTIAL</b></p> <p>THE INFORMATION CONTAINED IN THIS DRAWING IS THE SOLE PROPERTY OF TAHOE SLIPFENCE. ANY REPRODUCTION IN PART OR AS A WHOLE WITHOUT THE WRITTEN PERMISSION OF TAHOE SLIPFENCE IS PROHIBITED.</p>			<p>DIMENSIONS ARE IN INCHES TOLERANCES: FRACTIONAL ± ANGULAR: MACH ± BEND ± TWO PLACE DECIMAL ± THREE PLACE DECIMAL ±</p>	NAME	DATE	 <p>Tahoe Products Group Inc. Oakville, ON Phone: 1-866-336-2340 WWW.SLIPFENCE.COM</p>
				DRAWN	TRASER DESIGN INC.	
				CHECKED		
				ENG APPR.		
			MATERIAL			
			FINISH			
	NEXT ASSY	USED ON		COMMENTS:		
	APPLICATION		DO NOT SCALE DRAWING			
				SIZE	DWG. NO.	REV.
				<b>A</b>	<b>TSF-8FT-RES-VERT-SPEC</b>	
				SCALE:1:50	WEIGHT:	SHEET 1 OF 13



SECTION A-A  
SCALE 1 : 2

**PROPRIETARY AND CONFIDENTIAL**  
THE INFORMATION CONTAINED IN THIS DRAWING IS THE SOLE PROPERTY OF TAHOE SLIPFENCE. ANY REPRODUCTION IN PART OR AS A WHOLE WITHOUT THE WRITTEN PERMISSION OF TAHOE SLIPFENCE IS PROHIBITED.

		DIMENSIONS ARE IN INCHES TOLERANCES: FRACTIONAL ± ANGULAR: MACH ± BEND ± TWO PLACE DECIMAL ± THREE PLACE DECIMAL ±			
		MATERIAL 6005 ALUMINUM 1/8" WALL, POWDER COATED BLACK			
NEXT ASSY	USED ON	FINISH			
APPLICATION		DO NOT SCALE DRAWING			

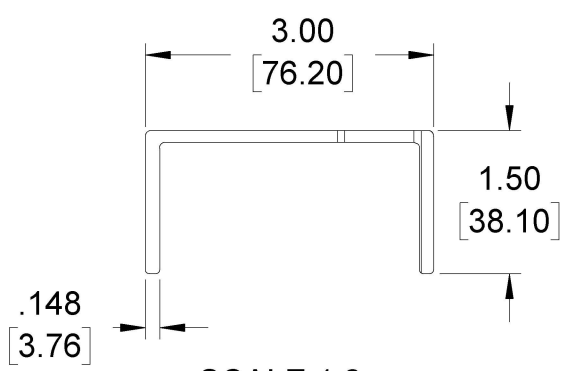
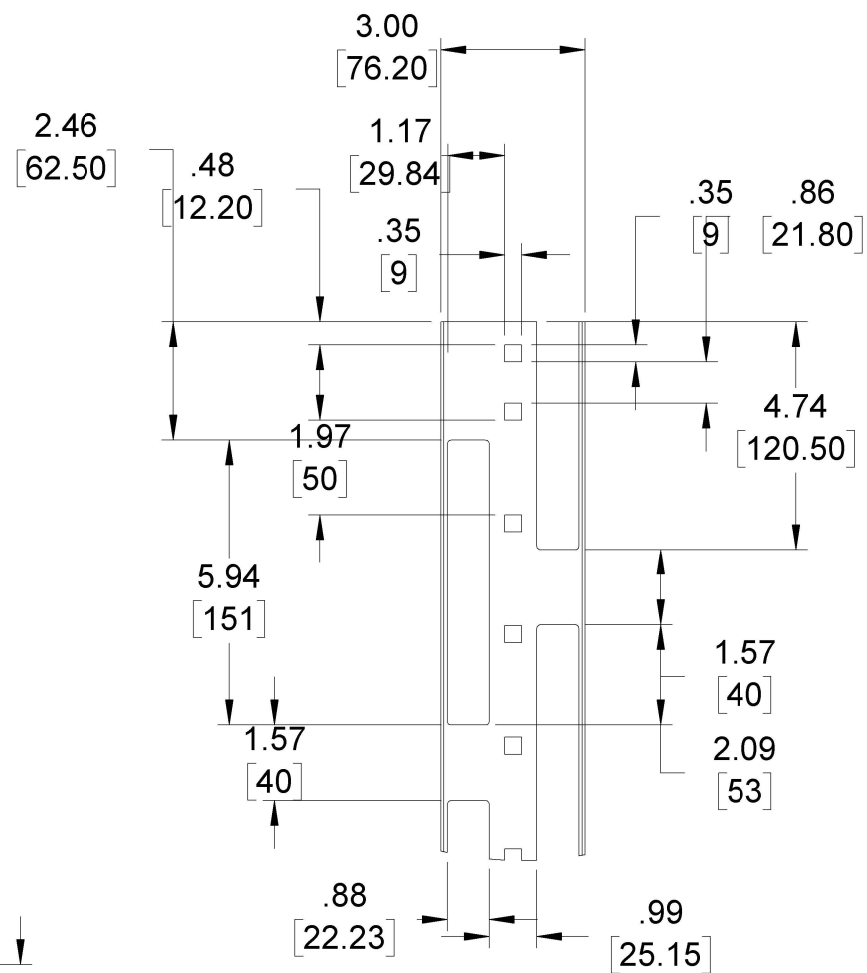
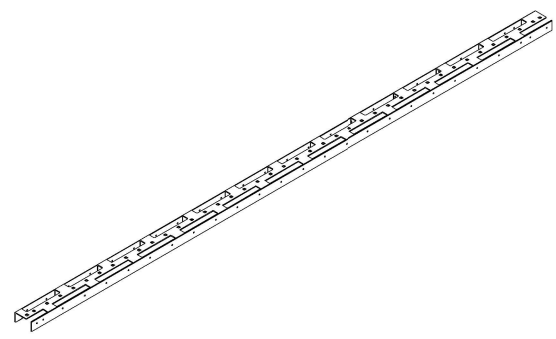
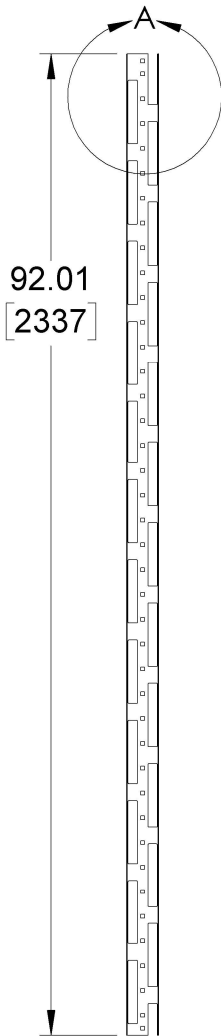
	NAME	DATE
DRAWN	TRASER DESIGN INC.	
CHECKED		
ENG APPR.		
MFG APPR.		
Q.A.		
COMMENTS:		

Tahoe Products Group Inc.  
Oakville, ON  
Phone: 1-866-336-2340  
WWW.SLIPFENCE.COM

**SLIPFENCE**

**3" VERTICAL POST**

SIZE	DWG. NO.	REV.
<b>A</b>	<b>TSF-8FT-RES-VERT-SPEC</b>	
SCALE: 1:32	WEIGHT:	SHEET 2 OF 13



SCALE 1:2

DETAIL A  
SCALE 1 : 4

**PROPRIETARY AND CONFIDENTIAL**  
THE INFORMATION CONTAINED IN THIS DRAWING IS THE SOLE PROPERTY OF TAHOE SLIPFENCE. ANY REPRODUCTION IN PART OR AS A WHOLE WITHOUT THE WRITTEN PERMISSION OF TAHOE SLIPFENCE IS PROHIBITED.

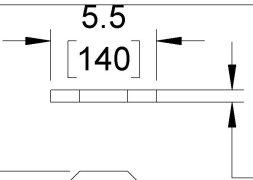
		DIMENSIONS ARE IN INCHES TOLERANCES: FRACTIONAL ± ANGULAR: MACH ± BEND ± TWO PLACE DECIMAL ± THREE PLACE DECIMAL ±		NAME	DATE
			DRAWN	TRASER DESIGN INC.	
			CHECKED		
			ENG APPR.		
				MFG APPR.	
				Q.A.	
				COMMENTS:	
NEXT ASSY	USED ON	MATERIAL	6061 ALUMINUM 1/8" WALL POWDER COATED BLACK		
		FINISH	2604 SUPER DURABLE POWDER COATING		
APPLICATION			DO NOT SCALE DRAWING		



Tahoe Products Group Inc.  
Oakville, ON  
Phone: 1-866-336-2340  
WWW.SLIPFENCE.COM

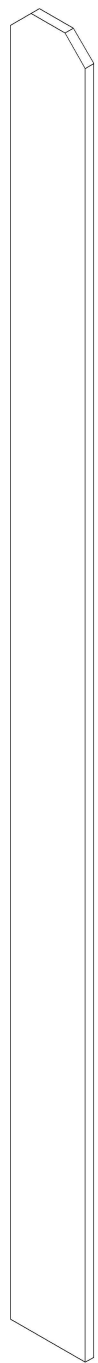
# STRINGER 92"

SIZE	DWG. NO.	REV.
A	TSF-8FT-RES-VERT-SPEC	
SCALE: 1:18	WEIGHT:	SHEET 3 OF 13



.625  
[16]

84  
[2134]



**PROPRIETARY AND CONFIDENTIAL**  
THE INFORMATION CONTAINED IN THIS DRAWING IS THE SOLE PROPERTY OF TAHOE SLIPFENCE. ANY REPRODUCTION IN PART OR AS A WHOLE WITHOUT THE WRITTEN PERMISSION OF TAHOE SLIPFENCE IS PROHIBITED.

		DIMENSIONS ARE IN INCHES TOLERANCES: FRACTIONAL ± ANGULAR: MACH ± BEND ± TWO PLACE DECIMAL ± THREE PLACE DECIMAL ±		NAME	DATE
			DRAWN	TRASER DESIGN INC.	
			CHECKED		
			ENG APPR.		
				MFG APPR.	
				Q.A.	
			COMMENTS:		
NEXT ASSY	USED ON	FINISH			
APPLICATION		DO NOT SCALE DRAWING			

Tahoe Products Group Inc.  
Oakville, ON  
Phone: 1-866-336-2340  
WWW.SLIPFENCE.COM

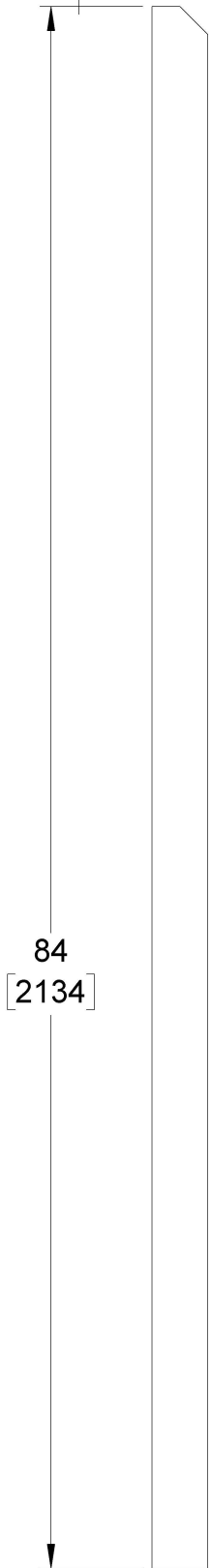


**BOARD FULL-84"**

SIZE	DWG. NO.	REV.
<b>A</b>	<b>TSF-8FT-RES-VERT-SPEC</b>	
SCALE: 1:10	WEIGHT:	SHEET 4 OF 13



.625  
[16]      3  
[76]



**PROPRIETARY AND CONFIDENTIAL**

THE INFORMATION CONTAINED IN THIS DRAWING IS THE SOLE PROPERTY OF TAHOE SLIPFENCE. ANY REPRODUCTION IN PART OR AS A WHOLE WITHOUT THE WRITTEN PERMISSION OF TAHOE SLIPFENCE IS PROHIBITED.

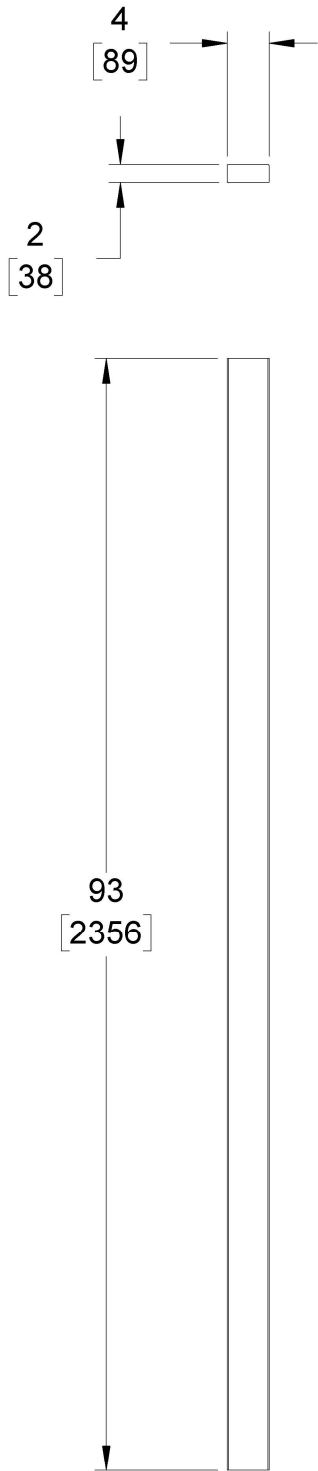
		DIMENSIONS ARE IN INCHES TOLERANCES: FRACTIONAL ± ANGULAR: MACH ±    BEND ± TWO PLACE DECIMAL ± THREE PLACE DECIMAL ±		NAME	DATE
			DRAWN	TRASER DESIGN INC.	
			CHECKED		
			ENG APPR.		
			MFG APPR.		
			Q.A.		
		MATERIAL 84" X 5/8" X 2.75" WOOD PICKETS	COMMENTS:		
NEXT ASSY	USED ON	FINISH			
APPLICATION		DO NOT SCALE DRAWING			



Tahoe Products Group Inc.  
Oakville, ON  
Phone: 1-866-336-2340  
WWW.SLIPFENCE.COM

**BOARD CUT-84"**

SIZE	DWG. NO.	REV.
<b>A</b>	<b>TSF-8FT-RES-VERT-SPEC</b>	
SCALE: 1:10	WEIGHT:	SHEET 5 OF 13

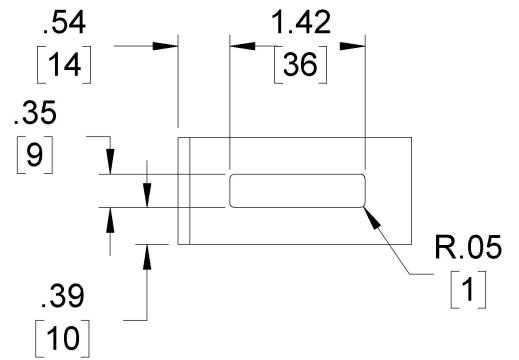
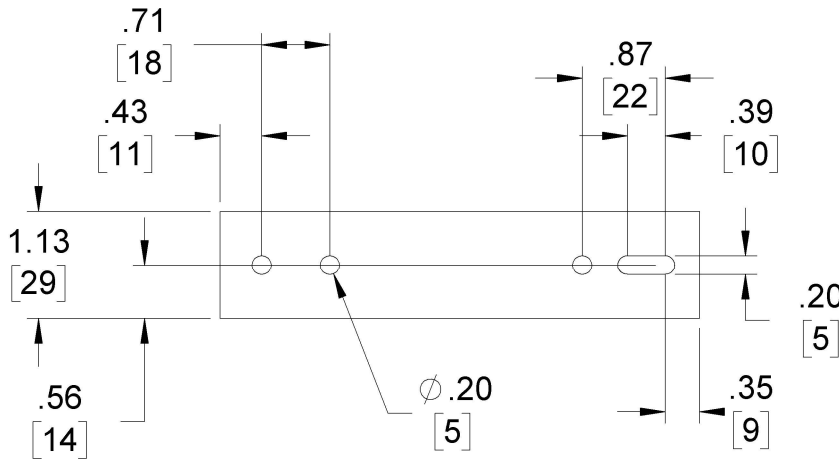
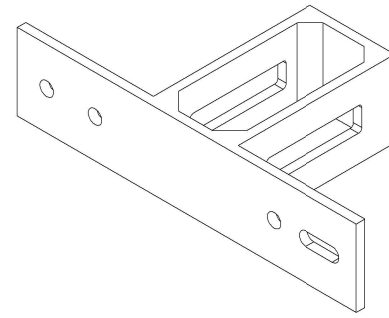
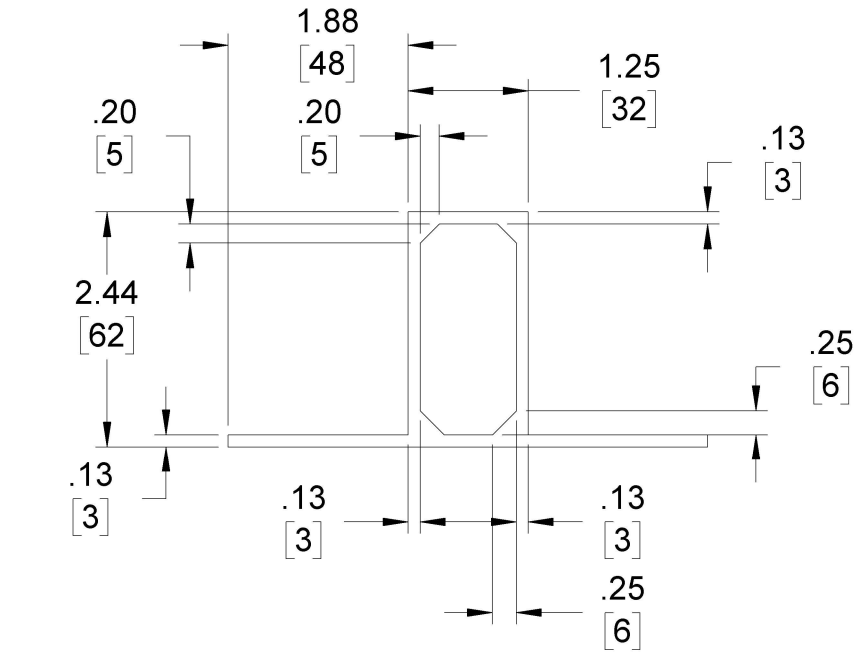


**PROPRIETARY AND CONFIDENTIAL**  
 THE INFORMATION CONTAINED IN THIS DRAWING IS THE SOLE PROPERTY OF TAHOE SLIPFENCE. ANY REPRODUCTION IN PART OR AS A WHOLE WITHOUT THE WRITTEN PERMISSION OF TAHOE SLIPFENCE IS PROHIBITED.

		DIMENSIONS ARE IN INCHES TOLERANCES: FRACTIONAL ± ANGULAR: MACH ± BEND ± TWO PLACE DECIMAL ± THREE PLACE DECIMAL ±
		MATERIAL BOARD, 2" X 4" X 92 3/4"
NEXT ASSY	USED ON	FINISH -
APPLICATION		DO NOT SCALE DRAWING

	NAME	DATE
DRAWN	TRASER DESIGN INC.	
CHECKED		
ENG APPR.		
MFG APPR.		
Q.A.		
COMMENTS:		

<b>SLIPFENCE</b>		Tahoe Products Group Inc. Oakville, ON Phone: 1-866-335-2340 WWW.SLIPFENCE.COM	
<b>BOARD, PINE</b>			
SIZE	DWG. NO.	REV.	
<b>A</b>	<b>TSF-8FT-RES-VERT-SPEC</b>		
SCALE: 1:16	WEIGHT:	SHEET 6 OF 13	



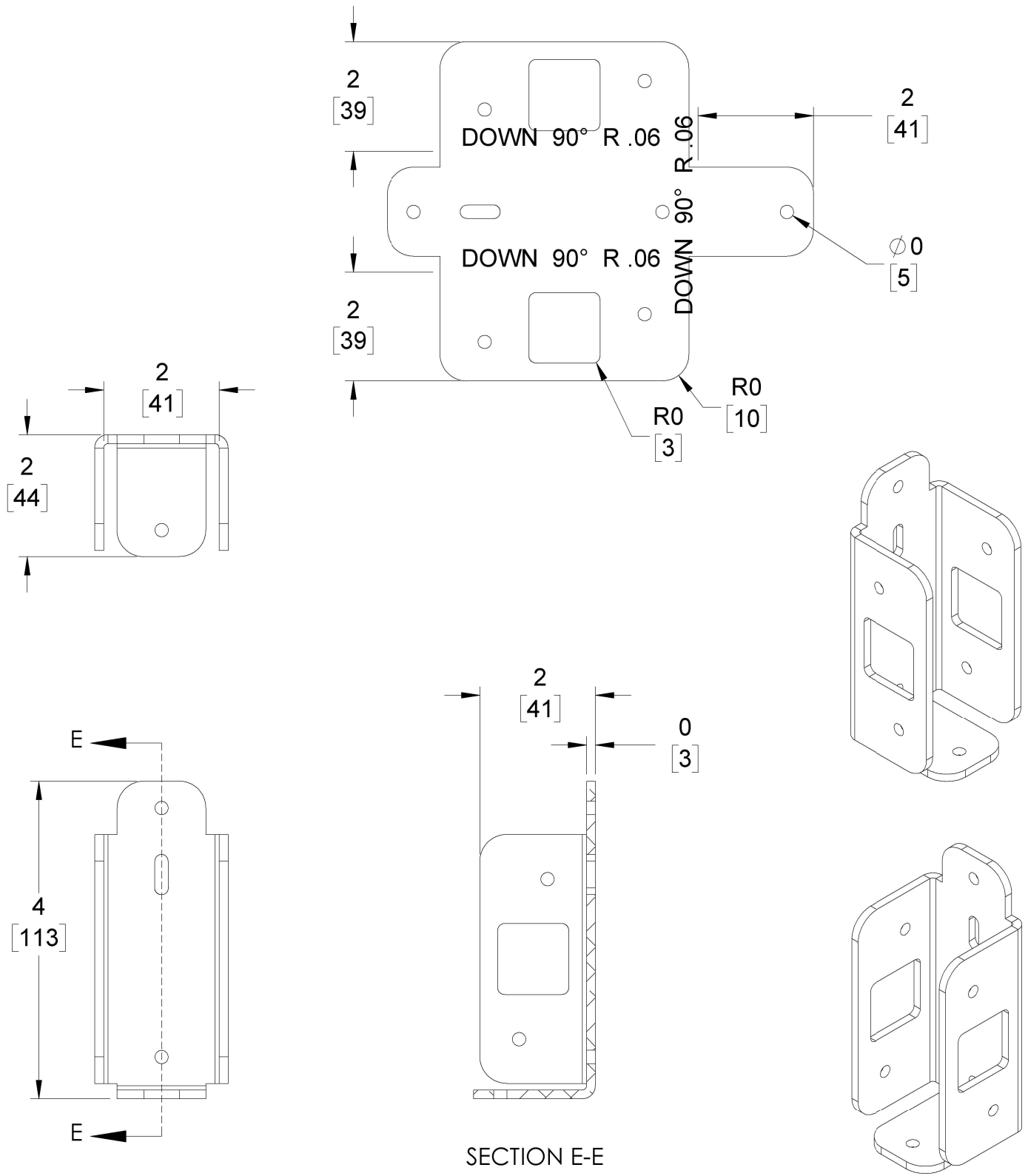
DIE # AH-73733, DWG # F1446  
 QV004, ALLOY 6061-T6  
 CUS CODE: F1446

**PROPRIETARY AND CONFIDENTIAL**  
 THE INFORMATION CONTAINED IN THIS DRAWING IS THE SOLE PROPERTY OF TAHOE SLIPFENCE. ANY REPRODUCTION IN PART OR AS A WHOLE WITHOUT THE WRITTEN PERMISSION OF TAHOE SLIPFENCE IS PROHIBITED.

		DIMENSIONS ARE IN INCHES TOLERANCES: FRACTIONAL ± ANGULAR: MACH ± BEND ± TWO PLACE DECIMAL ± THREE PLACE DECIMAL ±			
		MATERIAL ALUMINUM 1/8" WALL POWDER COATED BLACK			
		FINISH POWDER COAT BLACK			
NEXT ASSY	USED ON				
APPLICATION		DO NOT SCALE DRAWING			

	NAME	DATE
DRAWN	TRASER DESIGN INC.	
CHECKED		
ENG APPR.		
MFG APPR.		
Q.A.		
COMMENTS:		

		Tahoe Products Group Inc. Oakville, ON Phone: 1-866-336-2340 WWW.SLIPFENCE.COM	
		<h1>V-BRACKET</h1>	
SIZE	DWG. NO.	REV.	
A	TSF-8FT-RES-VERT-SPEC		
SCALE: 1:2	WEIGHT:	SHEET 7 OF 13	



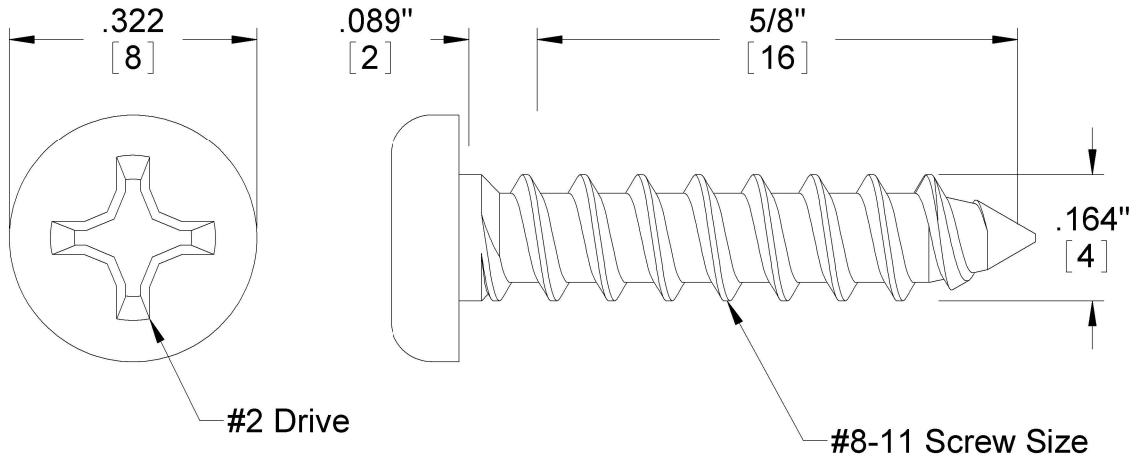
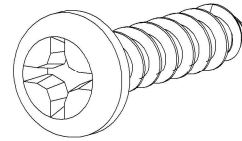
**PROPRIETARY AND CONFIDENTIAL**  
 THE INFORMATION CONTAINED IN THIS DRAWING IS THE SOLE PROPERTY OF TAHOE SLIPFENCE. ANY REPRODUCTION IN PART OR AS A WHOLE WITHOUT THE WRITTEN PERMISSION OF TAHOE SLIPFENCE IS PROHIBITED.

		DIMENSIONS ARE IN INCHES TOLERANCES: FRACTIONAL ± ANGULAR: MACH ± BEND ± TWO PLACE DECIMAL ± THREE PLACE DECIMAL ±		NAME	DATE
			DRAWN	TRASER DESIGN INC.	
			CHECKED		
			ENG APPR.		
			MFG APPR.		
			Q.A.		
			COMMENTS:		
		MATERIAL STEEL, A36			
		FINISH POWDER COAT BLACK			
NEXT ASSY	USED ON				
APPLICATION		DO NOT SCALE DRAWING			

**SLIPFENCE** Tahoe Products Group Inc.  
 Oakville, ON  
 Phone: 1-866-335-2340  
 WWW.SLIPFENCE.COM

SCALE: 1:2 | WEIGHT: | SHEET 8 OF 13

SIZE DWG. NO. **A** TSF-8FT-RES-VERT-SPEC | REV.



**PROPRIETARY AND CONFIDENTIAL**  
 THE INFORMATION CONTAINED IN THIS DRAWING IS THE SOLE PROPERTY OF TAHOE SLIPFENCE. ANY REPRODUCTION IN PART OR AS A WHOLE WITHOUT THE WRITTEN PERMISSION OF TAHOE SLIPFENCE IS PROHIBITED.

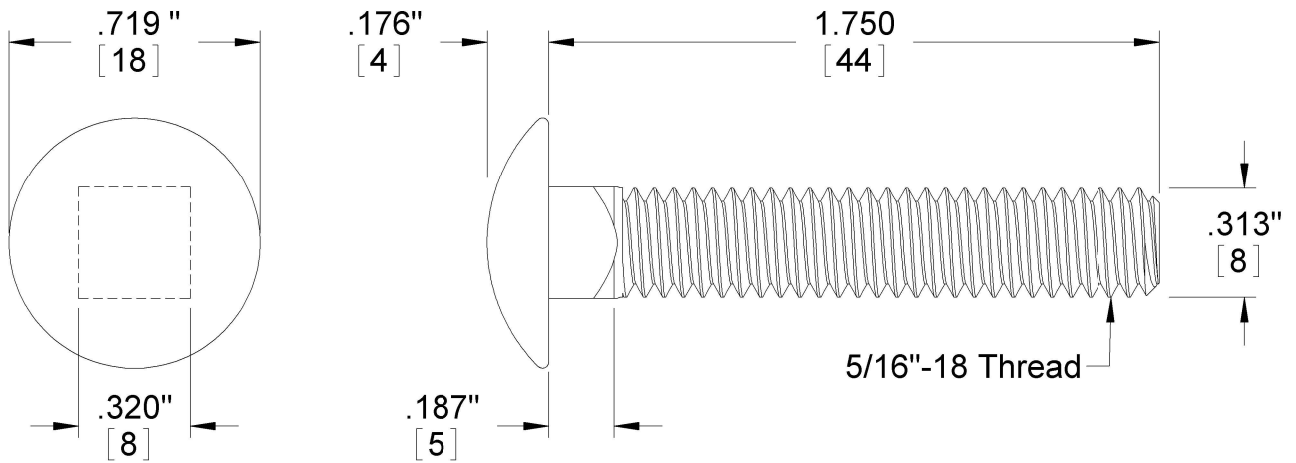
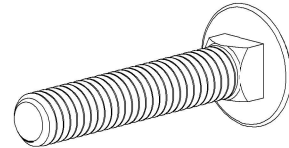
			DIMENSIONS ARE IN INCHES TOLERANCES: FRACTIONAL ± ANGULAR: MACH ± BEND ± TWO PLACE DECIMAL ± THREE PLACE DECIMAL ±		NAME	DATE
					TRASER DESIGN INC.	
					CHECKED	
					ENG APPR.	
					MFG APPR.	
					Q.A.	
					COMMENTS:	
			MATERIAL 410 STAINLESS STEEL			
			FINISH BLACK MAGNI			
	NEXT ASSY	USED ON				
	APPLICATION		DO NOT SCALE DRAWING			



Tahoe Products Group Inc.  
 Oakville, ON  
 Phone: 1-866-336-2340  
 WWW.SLIPFENCE.COM

**#8 x 3/4" Deep Thread Wood  
 Screws / #2 Phillips / Pan Head  
 / Type 17 Pt / 410 Stainless Steel**

SIZE	DWG. NO.	REV.
<b>A</b>	<b>TSF-8FT-RES-VERT-SPEC</b>	
SCALE:4:1	WEIGHT:	SHEET 9 OF 13



**PROPRIETARY AND CONFIDENTIAL**  
 THE INFORMATION CONTAINED IN THIS DRAWING IS THE SOLE PROPERTY OF TAHOE SLIPFENCE. ANY REPRODUCTION IN PART OR AS A WHOLE WITHOUT THE WRITTEN PERMISSION OF TAHOE SLIPFENCE IS PROHIBITED.

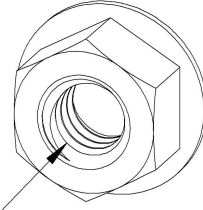
		DIMENSIONS ARE IN INCHES TOLERANCES: FRACTIONAL ± ANGULAR: MACH ± BEND ± TWO PLACE DECIMAL ± THREE PLACE DECIMAL ±	DRAWN	TRASER DESIGN INC.	DATE
			CHECKED		
			ENG APPR.		
			MFG APPR.		
		MATERIAL	Q.A.		
		410 STAINLESS STEEL	COMMENTS:		
NEXT ASSY	USED ON	FINISH			
		COATED BLACK			
APPLICATION		DO NOT SCALE DRAWING			



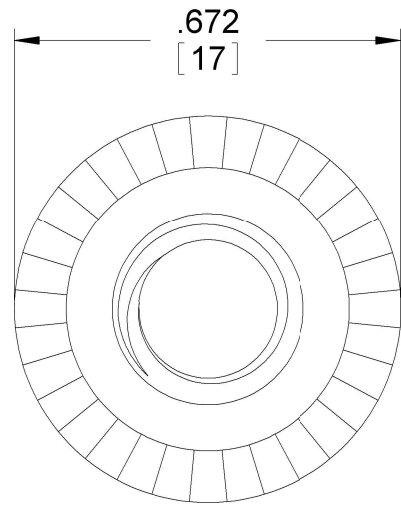
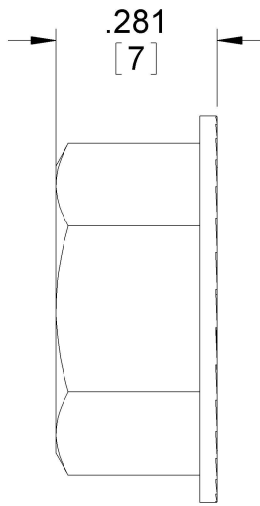
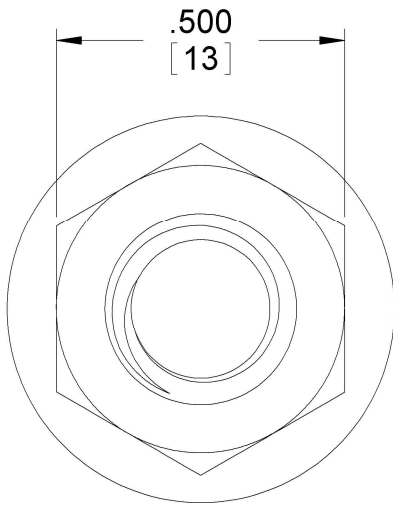
Tahoe Products Group Inc.  
 Oakville, ON  
 Phone: 1-866-336-2340  
 WWW.SLIPFENCE.COM

5/16-18 x 1 3/4" Carriage Bolts  
 / 410 Stainless Steel

SIZE	DWG. NO.	REV.
A	TSF-8FT-RES-VERT-SPEC	
SCALE: 1:0.55	WEIGHT:	SHEET 10 OF 13



5/16" -18 Thread



**PROPRIETARY AND CONFIDENTIAL**

THE INFORMATION CONTAINED IN THIS DRAWING IS THE SOLE PROPERTY OF TAHOE SLIPFENCE. ANY REPRODUCTION IN PART OR AS A WHOLE WITHOUT THE WRITTEN PERMISSION OF TAHOE SLIPFENCE IS PROHIBITED.

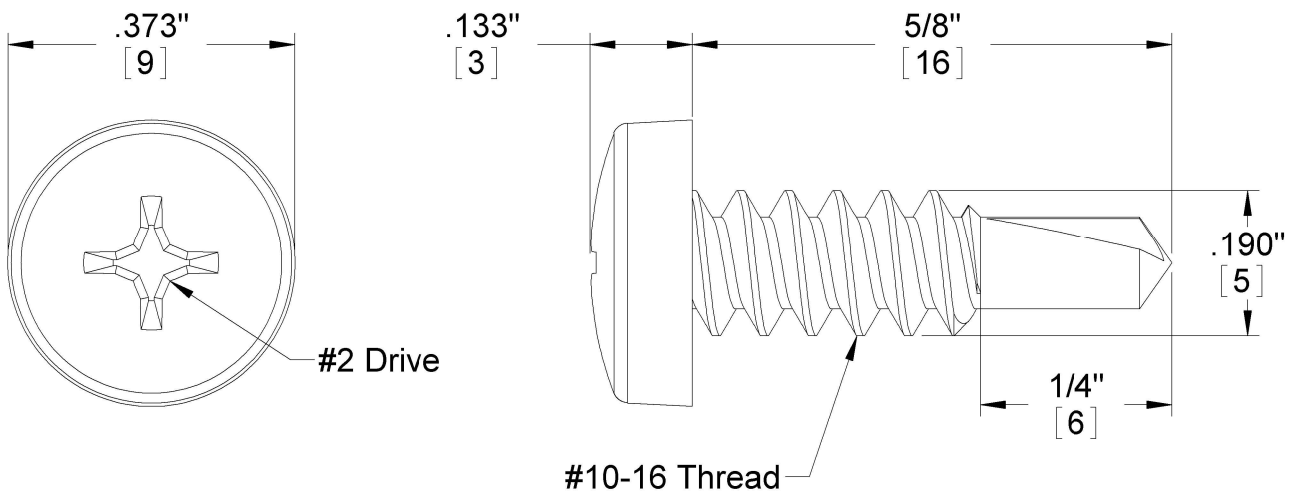
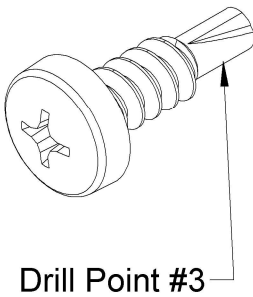
		DIMENSIONS ARE IN INCHES TOLERANCES: FRACTIONAL ± ANGULAR: MACH ± BEND ± TWO PLACE DECIMAL ± THREE PLACE DECIMAL ±		NAME	DATE
		MATERIAL 410 STAINLESS STEEL		TRASER DESIGN INC.	
		FINISH COATED BLACK		CHECKED	
NEXT ASSY	USED ON			ENG APPR.	
APPLICATION		DO NOT SCALE DRAWING		MFG APPR.	
				Q.A.	
				COMMENTS:	



Tahoe Products Group Inc.  
Oakville, ON  
Phone: 1-866-336-2340  
WWW.SLIPFENCE.COM

**5/16-18 Serrated Hex Flange Locknuts / 410 Stainless Steel**

SIZE	DWG. NO.	REV.
<b>A</b>	<b>TSF-8FT-RES-VERT-SPEC</b>	
SCALE:3:1	WEIGHT:	SHEET 11 OF 13



**PROPRIETARY AND CONFIDENTIAL**  
 THE INFORMATION CONTAINED IN THIS DRAWING IS THE SOLE PROPERTY OF TAHOE SLIPFENCE. ANY REPRODUCTION IN PART OR AS A WHOLE WITHOUT THE WRITTEN PERMISSION OF TAHOE SLIPFENCE IS PROHIBITED.

		DIMENSIONS ARE IN INCHES TOLERANCES: FRACTIONAL ± ANGULAR: MACH ± BEND ± TWO PLACE DECIMAL ± THREE PLACE DECIMAL ±		NAME	DATE
				TRASER DESIGN INC.	
				CHECKED	
				ENG APPR.	
				MFG APPR.	
				Q.A.	
				COMMENTS:	
		MATERIAL 410 STAINLESS STEEL			
		FINISH COATED BLACK			
NEXT ASSY	USED ON				
APPLICATION		DO NOT SCALE DRAWING			

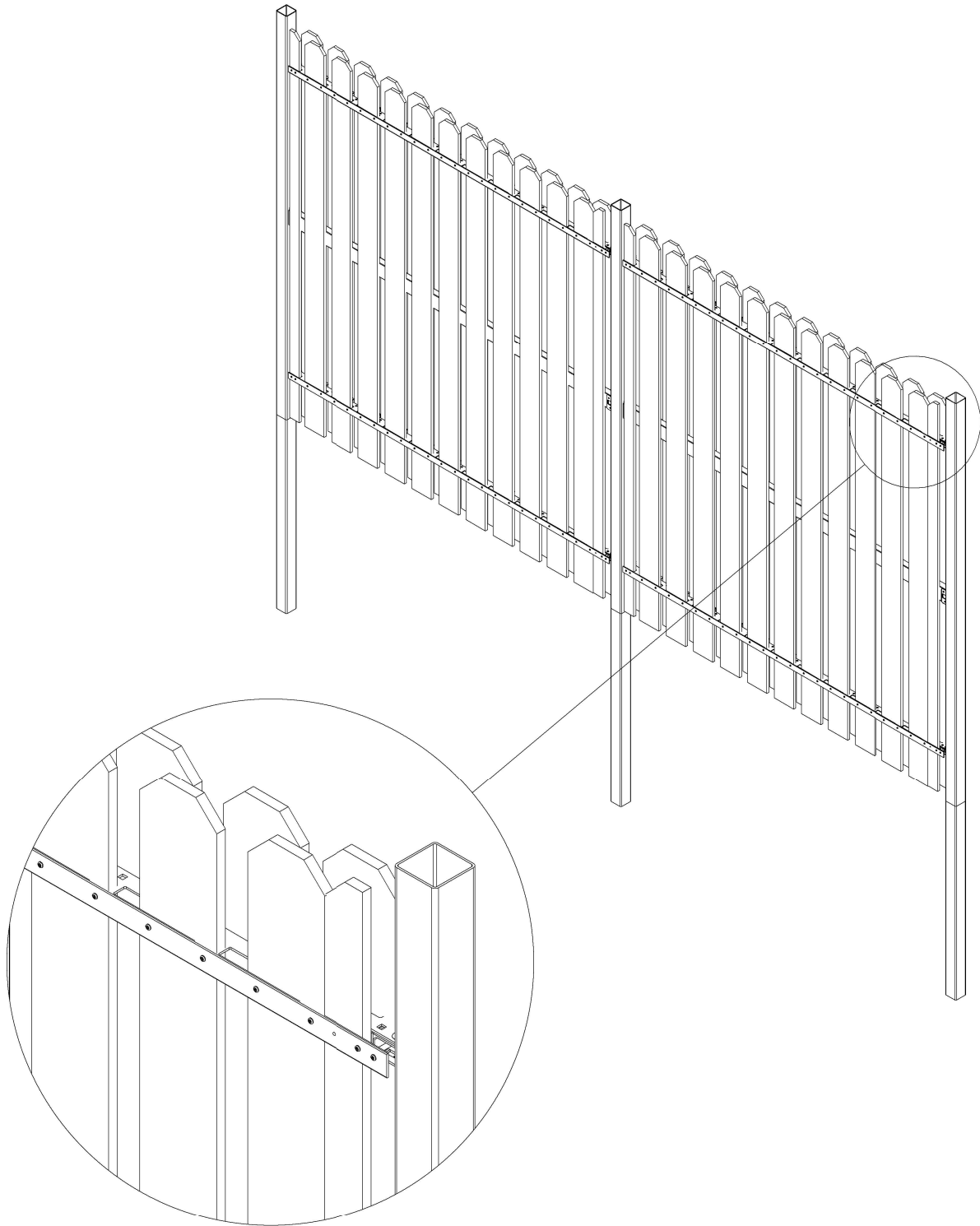


Tahoe Products Group Inc.  
 Oakville, ON  
 Phone: 1-866-336-2340  
 WWW.SLIPFENCE.COM


# 10 x 5/8" Self-Drilling  
 Screws / #2 Phillips / Pan  
 Head / 410 Stainless Steel

SIZE	DWG. NO.	REV.
A	TSF-8FT-RES-VERT-SPEC	
SCALE:4:1	WEIGHT:	SHEET 12 OF 13





DETAIL C  
SCALE 1 : 8

		DIMENSIONS ARE IN INCHES		NAME		DATE				Tahoe Products Group Inc.	
		TOLERANCES:		DRAWN						Oakville, ON	
		FRACTIONAL ±		CHECKED				-		WWW.SLIPFENCE.COM	
		ANGULAR: MACH ± BEND ±		ENG APPR.							
		TWO PLACE DECIMAL ±		MFG APPR.							
		THREE PLACE DECIMAL ±		Q.A.							
		MATERIAL		COMMENTS:							
		FINISH									
NEXT ASSY		USED ON									
APPLICATION		DO NOT SCALE DRAWING									

**PROPRIETARY AND CONFIDENTIAL**

THE INFORMATION CONTAINED IN THIS DRAWING IS THE SOLE PROPERTY OF TAHOE SLIPFENCE. ANY REPRODUCTION IN PART OR AS A WHOLE WITHOUT THE WRITTEN PERMISSION OF TAHOE SLIPFENCE IS PROHIBITED.